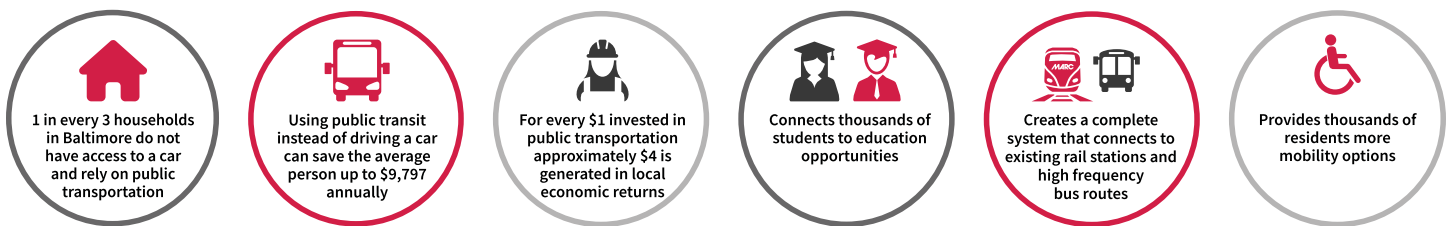


Frequently Asked Questions

What is the Red Line?

The Red Line is a high-frequency, high-capacity transit line for the Baltimore Region, and will be an investment in access to jobs, education, services, and opportunities. This project addresses a major gap in east-west transit service between Bayview and Woodlawn, through downtown Baltimore City. The Red Line has been shaped by over ten years of study, engineering, environmental analysis, and substantial community participation. **The relaunch of the Red Line has a strong foundation, and builds upon the extensive technical work and community engagement conducted prior to the 2015 cancellation of the project.**

Why is investing in the Red Line Important?



How does the project move forward? Why can't we just build the previous Red Line project now?

The federal process requires a re-evaluation of the previous Red Line project and an understanding of what has changed. Over the coming months, the Maryland Transit Administration (MTA) will lead an inclusive, community supported, and transparent alternatives development phase. This is an important and necessary requirement to obtain funding from the federal government to build the project. While the project study alternatives will follow a similar alignment to that of the original Red Line proposal, MTA will explore the following key considerations:

- 1. Transit mode** - LRT and BRT options were both evaluated in the prior Red Line EIS and in the East-West Feasibility Study. In the Feasibility Study, both performed well and will be studied in this phase.
- 2. Extent of tunneling** - Options to reduce or eliminate tunneling downtown through on-street alignments that follow industry best practices will be studied further to assess costs, benefits and drawbacks to tunneling.
- 3. Update to environmental documentation** - While the affected environment in the Red Line study area has not changed dramatically since 2013, MTA will assess updates to project impacts to reflect current conditions, as well as integrate with other projects, such as the Reconnecting Communities planning study for the West Baltimore United project and the RAISE East-West Priority Corridor project.
- 4. Highlandtown/Bayview alignment** - Due to recent development in the Highlandtown area, alignment adjustments and design changes in this portion of the corridor will be studied to reflect current conditions and to not preclude potential extension east to Baltimore County as part of a separate study.



How will the public be engaged?

We're kicking off a community engagement initiative built around equitable opportunities to access information and inform the project as it advances. While outreach and engagement will be ongoing throughout the project, there are two upcoming periods of focused public engagement planned for July/August 2023 and October/November 2023 that will support the project milestones and decision-making for the Locally Preferred Alternative. As meeting details are confirmed, they will be added to the project website: redlinemaryland.com.



How does this align with other projects MTA is doing?

Investment and progress in these communities cannot and will not wait. MTA will be leading multiple parallel efforts in the corridor to enhance transit service:

- **Immediate** improvements to east-west bus service beginning this Fall with **QuickLink40** service, providing a faster connection through limited-stop bus service between Westgate and Essex, MD.
- **Short-term** investments through the [Fast Forward](#) program including bus stop enhancements like bus shelters, real-time information signs, and ADA improvements.
- **Medium-term** investments through the [RAISE East-West Priority Corridor Project](#), including transit priority treatments like dedicated bus lanes and pedestrian safety investments that improve transit access and community connectivity.
- MTA will also launch the **Eastern Baltimore County Access Study** to evaluate alignments for further expansions east into Baltimore County.

MTA looks forward to working with the community and stakeholders to relaunch the Red Line project and deliver upon the promise and need for high-frequency, and high-quality transit in the Baltimore region.

How do I get more information?

For more information about the Red Line and to view upcoming engagement events, please visit the Red Line website at redlinemaryland.com

Follow us on social media - [Facebook](#), [Instagram](#), [Twitter](#) @redlinemaryland



REDLINE